

47/84

# EVERGREEN II

PART OF VILLAGES OF ORIOLE P.U.D.

SITUATE IN SECTION 16, TOWNSHIP 46 SOUTH, RANGE 42 EAST,  
PALM BEACH COUNTY, FLORIDA, BEING A REPLAT OF A PORTION  
OF TRACT A OF PLAT NO. 1 VILLAGES OF ORIOLE (P.B. 30, P. 38-40)

FEBRUARY, 1983

SHEET 2 OF 2

P.U.D. TABULAR DATA

GROSS AREA OF PROJECT	5.98± ACRES
TOTAL NUMBER OF DWELLING UNITS	104
GROSS DENSITY	17.69 D.U./ACRE
BUILDING COVERAGE	1.09± AC 18.54%
UNCOVERED PARKING (PLANNED & RESERVED)	0.96± AC 16.33%
ACCESS ROADS	0.71± AC 12.07%
1/2 RECREATION AREA	0.16± AC 2.72%
OPEN SPACE	
1/2 RECREATION AREA	0.16± AC 2.72%
REMAINING AREA	2.60± AC 47.62%
TOTAL OPEN SPACE	2.96± AC 50.34%

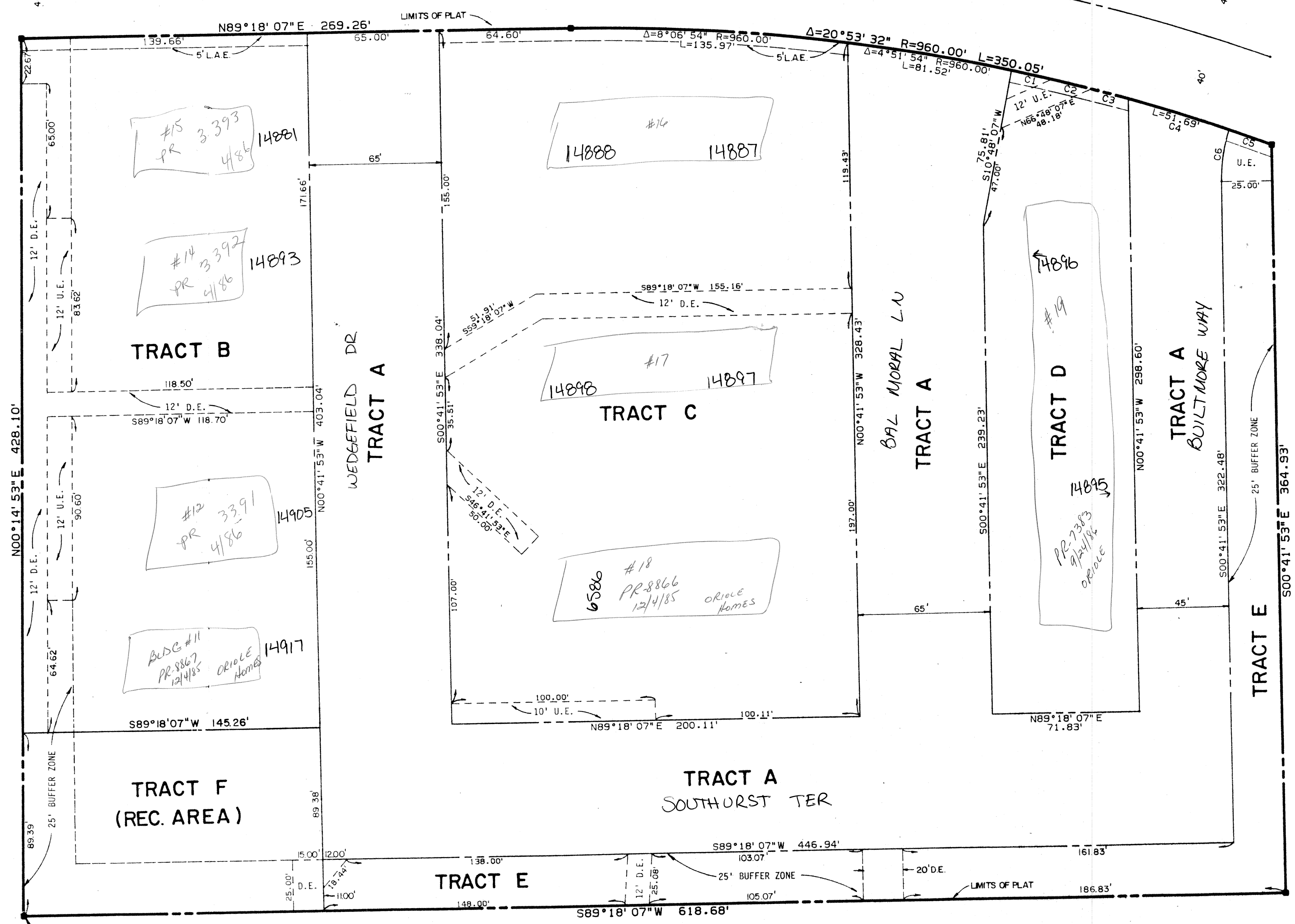
DEAUVILLE VILLAGE  
VILLAGES OF ORIOLE A P.U.D.  
(P.B. 36, P. 141)

STATE OF FLORIDA  
COUNTY OF PALM BEACH

THIS PLAT WAS FILED FOR  
RECORD AT \_\_\_\_\_ DAY OF \_\_\_\_\_  
AD, 1983 AND DULY RECORDED  
IN PLAT BOOK \_\_\_\_\_ ON PAGES  
\_\_\_\_\_ AND \_\_\_\_\_

JOHN B. DUNKLE, CLERK  
CIRCUIT COURT  
BY: \_\_\_\_\_, D.C.

40'  
40'  
SOUTH ORIOLE BLVD. (P.B. 36, P. 141)



TRACT A, PLAT NO. 1  
VILLAGES OF ORIOLE  
(P.B. 30, P. 38-40)

NO	DELTA	RADIUS	LENGTH
C1	1°12'16"	960.00	20.18
C2	1°10'57"	960.00	19.82
C3	1°06'50"	960.00	18.67
C4	3°05'07"	960.00	51.70
C5	1°19'34"	960.00	22.22
C6	16°45'37"	78.15	25.59

0326-308

47/41

P.O.B.  
NW CORNER OF  
VILLAGES OF ORIOLE SHOPS  
PLAT NO. 2 (P.B. 43, P. 104)

VILLAGES OF ORIOLE SHOPS  
PLAT NO. 2  
P.B. 43, P. 104

Meridian Surveying and mapping inc. WEST PALM BEACH, FLORIDA

DRAWN	ME.H.	DATE	FEB., 1983
CHECKED		SCALE	1" = 30'
DRAWING NO.	82-P-073		

EVERGREEN II  
PART OF VILLAGES OF ORIOLE P.U.D.